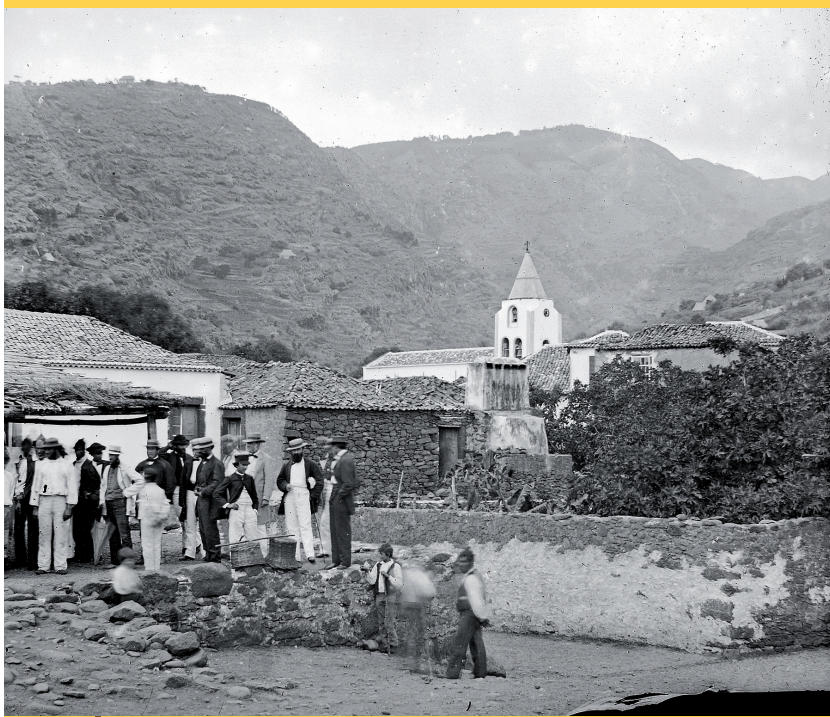


Pictures and memory of the municipality of SANTA CRUZ



The ancient village square of Santa Cruz in 1826, showing the church of Salvador, built between 1502-1512, and the old pillory; drawing by Reverend James Bulwer published in the album «Views in the Madeiras», London, 1827. Photographic reproduction by Perestrelos, ABM, COLFOT, m11023.



A scene of the village of Santa Cruz, showing in the background the tower of church of Salvador. Photo by Vicentes, 1870s, glass plate negative, MFM-AV, in deposit at ABM, VIC/226.



Early 16th century silver gilt pax, from church of Salvador, located today at the Quinta das Cruzes Museum in Funchal. Photo by Perestrelos, 1960s, photographic print, ABM, COLFOT, m11027.

Pictures and memory of the municipality of SANTA CRUZ

21st November – 2020

30th January – 2021

CASA DA CULTURA DE SANTA CRUZ
QUINTA DO REVOREDO



Village of Santa Cruz

Project team

Exhibition content – Jorge Valdemar Guerra
Graphic design – Leonardo Vasconcelos
Translation – Liliana Pestana; revised by Cefyn Embling-Evans
Contributions to document selection – Fátima Barros and Tânia Jesus
Exhibition assembly – Madeira Archives and Library Department (DRABM)

Coordination – Filipe dos Santos
Photo credit – Madeira Archives and Library (ABM); Madeira Photography Museum – Atelier Vicente's (MFM-AV)
This exhibition is a joint project between the DRABM and the Casa da Cultura de Santa Cruz – Quinta do Revoredo



Secretaria Regional de Turismo e Cultura
Direção Regional do Arquivo e Biblioteca da Madeira



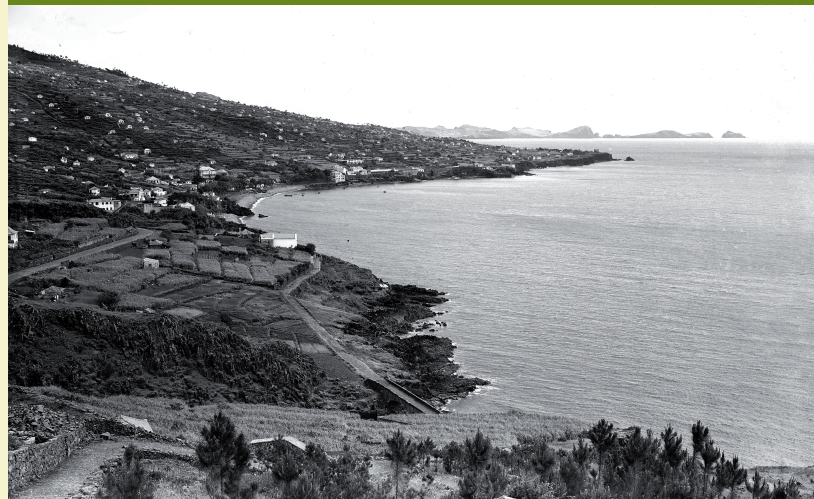
Co-financed by:



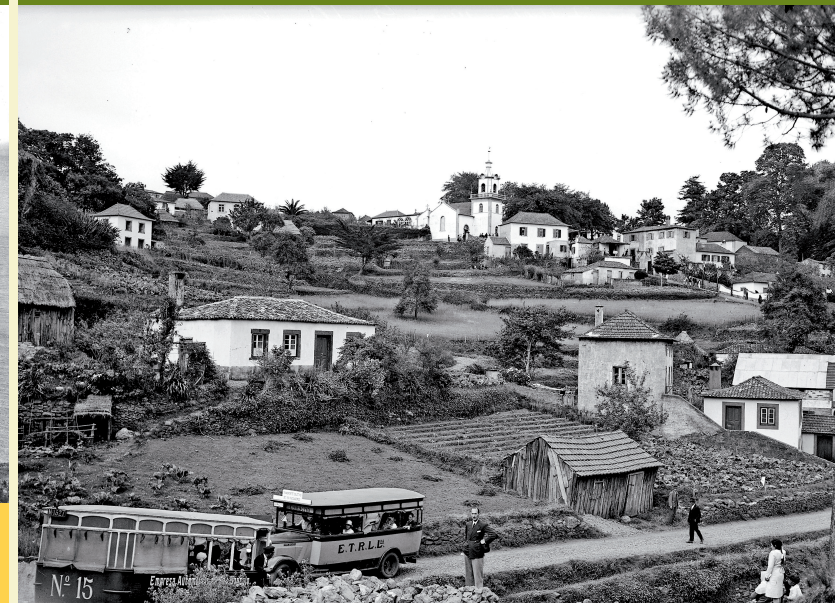
PICTURES AND MEMORY OF THE MUNICIPALITY OF SANTA CRUZ



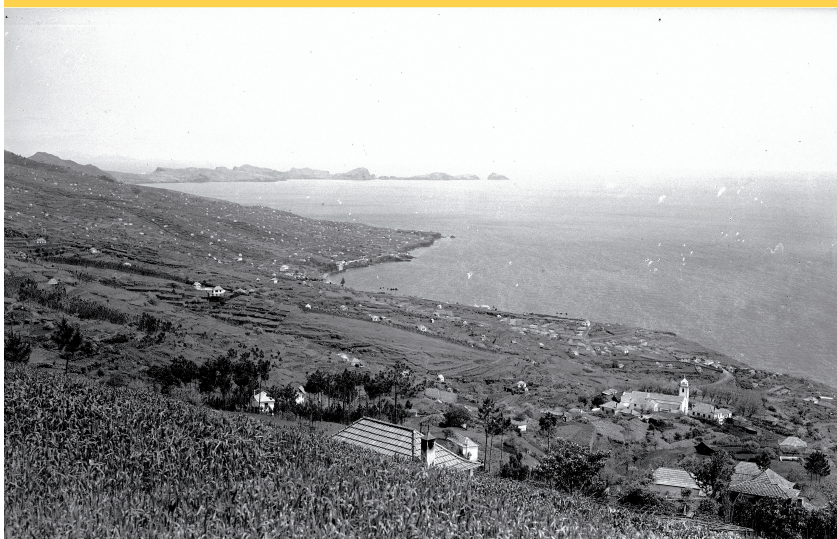
Scenic countryside of Santo António da Serra; showing several thatched roofed buildings. Photo by Joaquim Augusto de Sousa, late 19th century, glass plate negative, MFM-AV, in deposit at ABM, JAS/900.



Panorama viewed from the west, showing in the background the chapel of São Pedro and, beyond, the bay of Santa Cruz. Photo by Figueiras, 1940s, glass plate negative, MFM-AV, in deposit at ABM, PHF/142.



Panoramic view of the picturesque centre of Camacha; in the foreground, two unique passenger cars; in the background, the church of São Lourenço. Photo by Figueiras, late 1930s or early 1940s, glass plate negative, MFM-AV, in deposit at ABM, PHF/109.



Panoramic view of Gaula; showing the church of Nossa Senhora da Luz (Our Lady of Light), destroyed by a fire in 1964; beyond, the bay of Santa Cruz and, in the background, Ponta de São Lourenço. Photo by Figueiras, 1930s or 1940s, glass plate negative, MFM-AV, in deposit at ABM, PHF/131.

Over a century and a half old and even one of them exceeds two centuries, are some of the iconographic documents – drawings and photographs – shown in this exhibition, about the Municipality of Santa Cruz – the fifth of the project *Pictures and Memory* of the municipalities of Madeira, which started in 2019.

The old heritage built in the five parishes of the municipality secures almost all the exhibition. It displays remote panoramic views of old towns and immaculate rural landscapes, propitious registers of remarkable architectural figures, from old churches, secular chapels and their interior architectural elements and works of art.

Briefly, pictorial data, searching glances, shutters that opened with more elaborate framings or less successful perspectives, but always as historical testimonies, always memories, in a way, cruel and disturbing memoirs, especially when the captured objects disappeared forever or are at similar risk.

Special reference to the archaeological excavations carried out by António Aragão in 1961 – the first one in Madeira – which exposed the remains of the convent of Nossa Senhora da Piedade (Our Lady of Pity convent), built in the place where, in the same year, the construction of the airport of Santa Catarina began.

The images shown in this exhibition are part of the *Photographic Collection (COLFOT)* of the Madeira Archives and Library (ABM) and the collection of the Madeira Photography Museum – *Atelier Vicente's* (MFM-AV).

Jorge Valdemar Guerra



Seaview of Reis Magos, Caniço; revealing an old 18th century building in an advanced state of ruin. Photo by Perestrelas, 1960s, glass plate negative, MFM-AV, in deposit at ABM, PER/7995.